

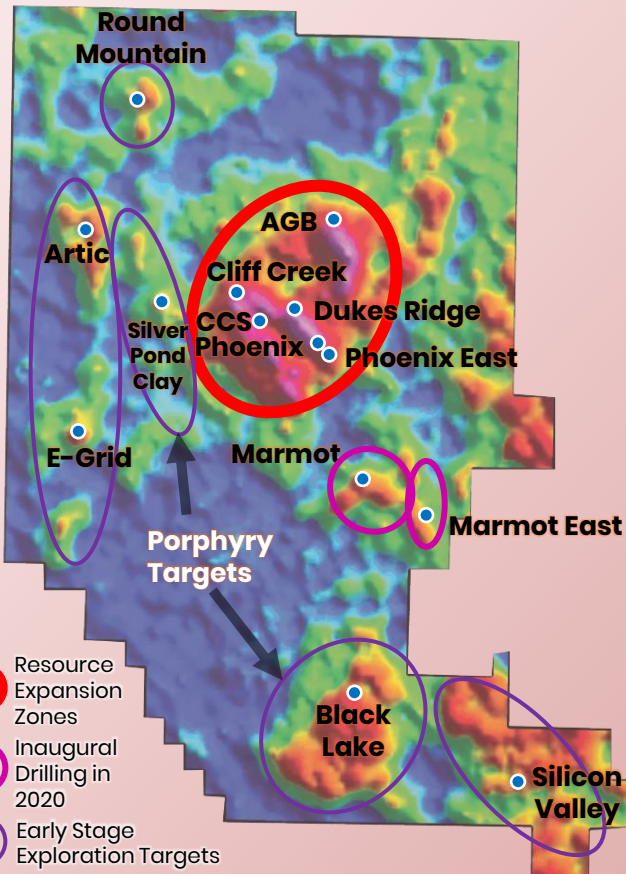
5 Million OZ GOLD EQUIVALENT

100% Owned

GOLD SILVER PROJECT



- Focused on proving and developing the substantial resource potential of the Lawyer's Gold and Silver Project
- Past producer with ~\$50 million in existing infrastructure within a proven and profitable mining jurisdiction
- Near surface epithermal Au-Ag system with possible link to deeper porphyry system
- Five defined resource target zones: Cliff Creek, AGB, Phoenix, Phoenix South, & Dukes Ridge
- Benchmark is targeting 1.68 To 1.92 Million Oz. Gold Equivalent Grading 1.71 To 1.73 AuEq g/t At Cliff Creek Zone
- Additional discovery targets identified along a 20+ km trend
- Up to 50,000 metres of drilling planned in 2020
- New resource estimate following drilling
- Fully funded with \$10.5 million (~\$20 million fully-diluted)



90% of the 140 km² property is underexplored

- Five resource expansion zones
- Two new discovery zones for 2020 drill testing
- Six early stage exploration targets for new discoveries

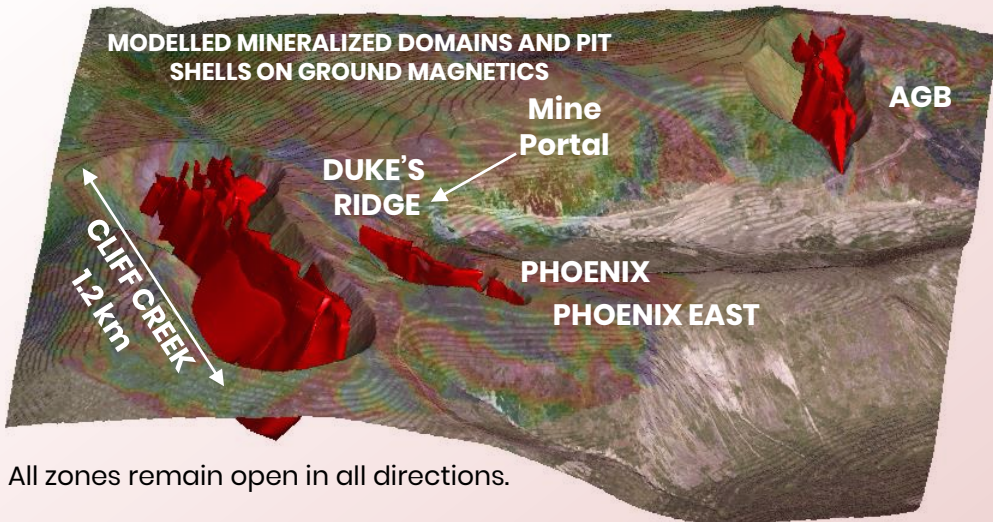
Previous mining overlooked the bulk-tonnage and porphyry potential

- High-grade drill intercepts within wider mineralized envelopes
- Open at depth - average drill hole under 100m
- Copper porphyry targets associated with large zones of clay alteration, soil and radiometric anomalies, and key stratigraphic horizons

5 Resource expansion targets at surface defined by:

- Drilling
- Anomalous rock and soil geochemistry
- Zones of potassic alteration
- Radiometric geophysics
- Airborne magnetics

Cliff Creek Zone Exploration Target***



Cliff Creek Exploration Target ranges from **30.6** to **34.7 Mt** with a range in grades of **1.71** to **1.73 g/t AuEq** at a lower cutoff of 0.5 g/t Au, yielding an estimated range of **1,682,000** to **1,924,000 AuEq ounces.***

86% of AuEq ounces **within 300m of surface.**

AGB, Duke's Ridge, Phoenix, and Phoenix East zones have similar resource potential.

All zones remain open in all directions.

AuCutoff	Tonnes	Avg au g/t	au oz	Avg ag g/t	ag oz	Avg EQ Au ppm	EQ Au oz
0.2	61,969,042	0.866	1,725,597	25.66	51,124,711	1.154	2,299,767
0.5	34,687,453	1.278	1,425,494	39.791	44,375,916	1.725	1,923,869
2	4,349,789	3.678	514,302	128.402	17,956,826	5.12	715,971
0.2	55,046,348	0.859	1,520,935	25.486	45,104,233	1.146	2,027,490
0.5	30,622,770	1.266	1,246,245	39.451	38,841,095	1.709	1,682,460
2	3,655,852	3.794	445,972	130.289	15,313,962	5.258	617,960

*A silver to gold ratio of 80:1 has been used in the calculation of AuEq

**Total ounces may not add due to rounding.

***The tonnes, grade and ounces presented are an Exploration Target, and are conceptual in nature, there has been insufficient exploration to define a mineral resource and it is uncertain if further exploration will result in the target being delineated as a mineral resource. The Target has not been evaluated for reasonable prospects for future economic extraction as metallurgical work and drilling are planned and ongoing.

Michael Dufresne, M.Sc., P.Geol., P.Geo., an independent director of the Company, also serves as a Technical Advisor and is the Qualified Person, as defined by National Instrument 43-101, responsible for reviewing and approving the technical content of all materials publicly disclosed by Benchmark, including the contents of this presentation.

SHARE STRUCTURE as of June 8, 2020

Current shares outstanding & Market Cap @ \$0.365	118.5 M	\$43.25 M
Working Capital		\$10.20 M
In the money Warrants	1.4 M	\$0.42 M
In the money Options	10.4 M	\$2.9 M
In the money Diluted Working Capital		\$13.52 M
In the money Diluted Shares & Market Cap @ \$0.365	130.3 M	\$47.55 M
Fully diluted Working Capital		\$20.42 M
Fully Diluted Shares and Market Cap @ \$0.365	150.8 M	\$55.04 M

TSX-V:BNCH

OTCQB: CYRTF

WKN: A2JM2X

DIRECTORS, OFFICERS, AND ADVISORS

John Williamson, P.Geol – CEO & Chairman
Jim Greig, MBA – President & Director
Sean Mager – CFO & Director
Jeremy Yaseniuk – Corporate Development
Toby Pierce, MBA – Director
Michael Dufresne, M.Sc., P.Geol., P.Geo. – Director
Ewan Webster, Ph.D., P.Geo. – Senior Geologist

- Award-winning* capability
- *Twice won top-ten mining company in TSXV 50™
- 150+ years of industry experience
- Raised >\$400 Million for exploration, development, and production projects worldwide
- Record of innovation and discovery
- Successful in good and bad markets
- >40% closely held, interests aligned with investors