

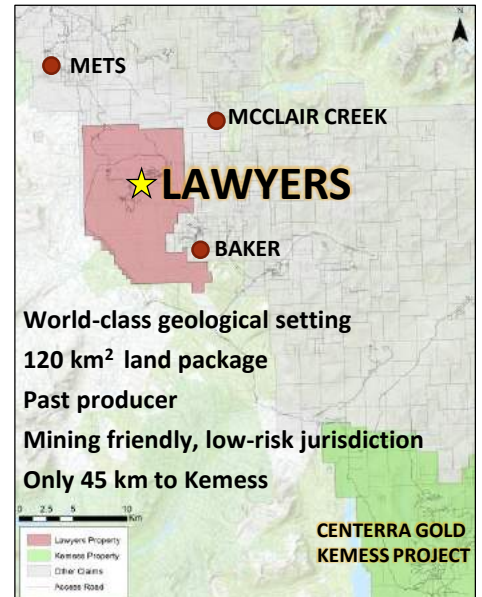
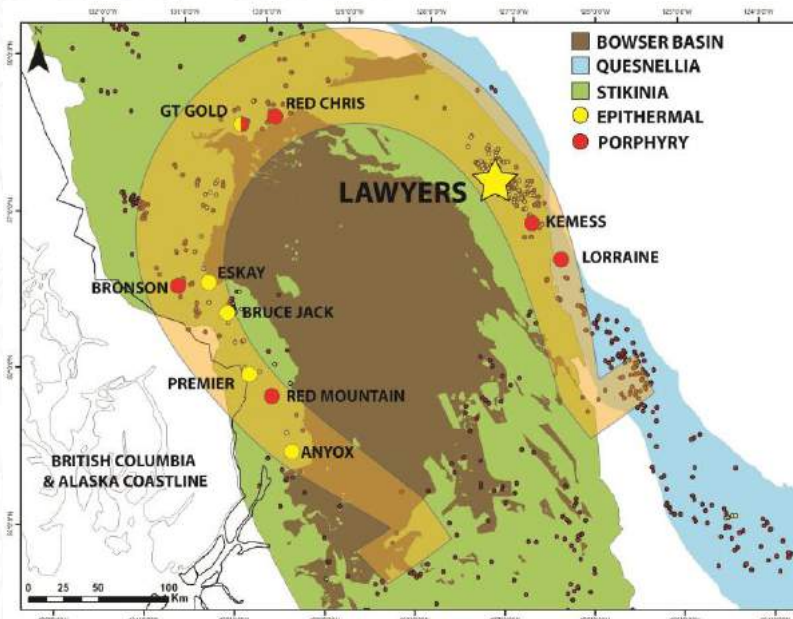
BENCHMARK FACTSHEET



TARGETING 5+ M/OZ GOLD EQUIVALENT AT ITS LAWYERS PROJECT, BC, CANADA

- Focused on proving and developing the substantial resource potential of the Lawyer's gold and silver project
- Past producer with ~\$50 million in existing infrastructure within a proven and profitable mining jurisdiction
- Near surface epithermal Au-Ag system with possible link to deeper porphyry system
- 2019 Objectives
 - 30,000+ m drill program focused on infill, step-out, and deeper drilling to expand the current resource
 - Drill testing new geophysical and geochemical targets on the 20+ km Lawyer's Trend
 - 3500 soil samples, 1000 rock samples, mapping, ground geophysics

LAWYERS GOLD AND SILVER PROJECT LOCATED IN THE PROLIFIC 'GOLDEN HORSESHOE'



Lawyers project is located within the northeastern region of the prolific metal-endowed Stikine terrane. Magmatic events in Stikinia during the Late Triassic and Early Jurassic are the driving source for the development of mineralizing porphyry and epithermal systems. On both the east and west sides of the Bowser Basin the same magmatic and mineralizing events are recognized, forming an arch of gold and polymetallic mineralization; known herein as the 'Golden Horseshoe'

SHARE STRUCTURE JUNE 5, 2019

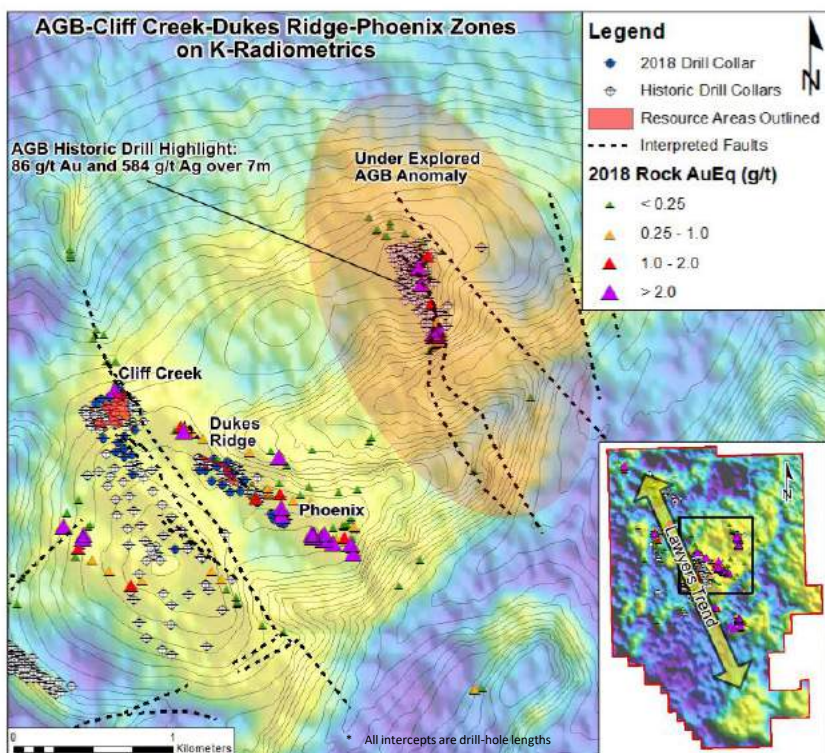
Current shares outstanding & market cap @ \$0.335	51.3 M	\$17.1 M
Estimated working capital		\$2.5 M
In the money warrants	18 M	\$4.0 M
In the money options	3.4 M	\$0.6 M
In the money diluted working capital		\$4.6 M
In the money diluted shares & market cap @ \$0.335	72.7 M	\$24.3 M
Fully diluted working capital		\$7.1 M

Information contained herein has been extracted from the Company's corporate presentation. The complete presentation, including cautionary statements and resource disclosure, can be found on the Company's website.

BENCHMARK FACTSHEET



EXPLORATION PROGRAM HIGHLIGHTS

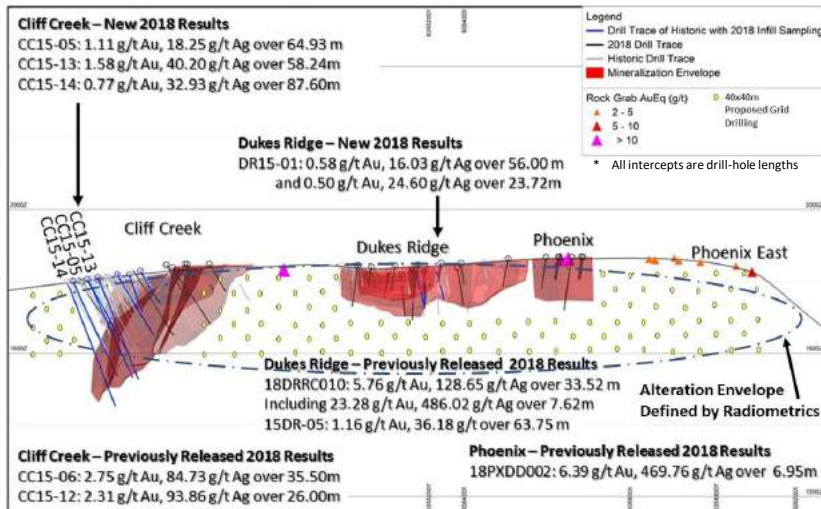


Resource expansion and new targets delineated by 2018 program:

- High-grade drill intercepts within wider mineralized envelopes
- Zones open at depth and along strike - average drill hole under 100m
- Resampling of historical drill-holes has generated bulk tonnage drill intercepts
- Anomalous rock and soil geochemistry
- Pervasive zones of potassic alteration
- Large radiometric geophysical anomaly
- Recently acquired data, geological compilation, and reinterpretation has revealed significant potential to add gold and silver ounces

Select high-grade drilling intercepts*:

- 3 m @ 259.76 g/t Au & 3,320.3 g/t Ag
- 7 m @ 108.36 g/t Au & 911.2 g/t Ag
- 7 m @ 86.06 g/t Au & 583.83 g/t Ag
- 3 m @ 52.02 g/t Au & 846.44 g/t Ag**
- 28 m @ 12.67 g/t Au & 143.39 g/t Ag



Select bulk-tonnage drilling intercepts*:

- 57.9 m @ 6.96 g/t Au & 254.70 g/t Ag
- 33.53 m @ 5.76 g/t Au & 128.65 g/t Ag**
- 40.9 m @ 4.06 g/t Au & 409.06 g/t Ag
- 35.0 m @ 3.78 g/t Au & 82.40 g/t Ag
- 36.5 m @ 2.68 g/t Au & 82.57 g/t Ag

*All intercepts are drill-hole lengths

**2018 Drill result

THE TEAM

John Williamson, P.Geol – CEO & Chairman
Jim Greig, MBA – President & Director
Sean Mager – CFO & Director
Jeremy Yaseniuk – Corporate Development
Toby Pierce, MBA – Director
Mike Dufresne, M.SC., P.Geol., P.Geo. – Director & QP
Ewan Webster, Ph.D., – Senior Geologist

Collectively over 100 years of mining experience
 Delivered shareholder value through good and bad markets
 Raised in excess of \$400 million towards exploration, development, & production projects globally
 Success through the discovery, development, and production cycles